

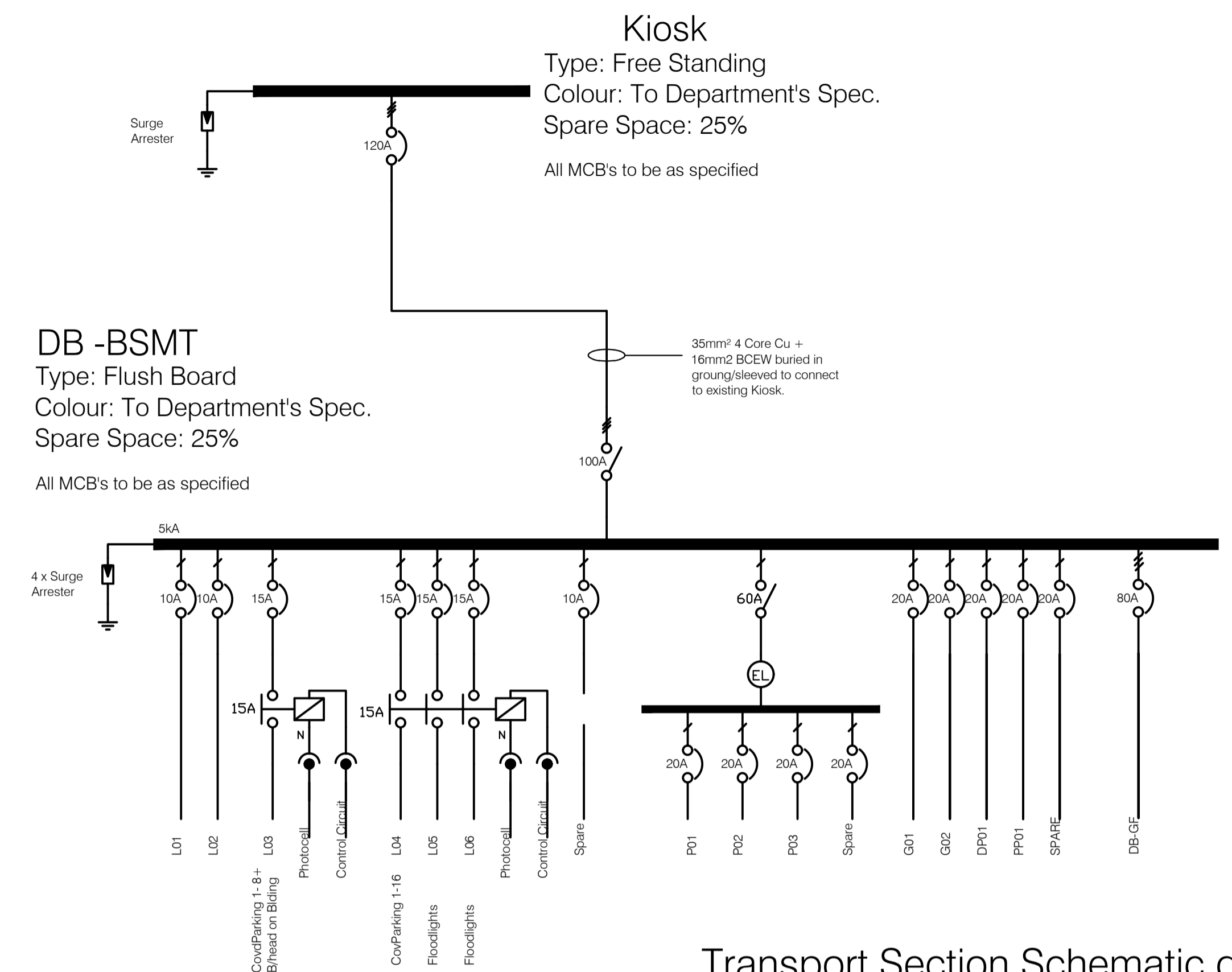
REVISION STATUS				
Rev.	DATE	DESCRIPTION	BY	CHECKED

GENERAL NOTES:

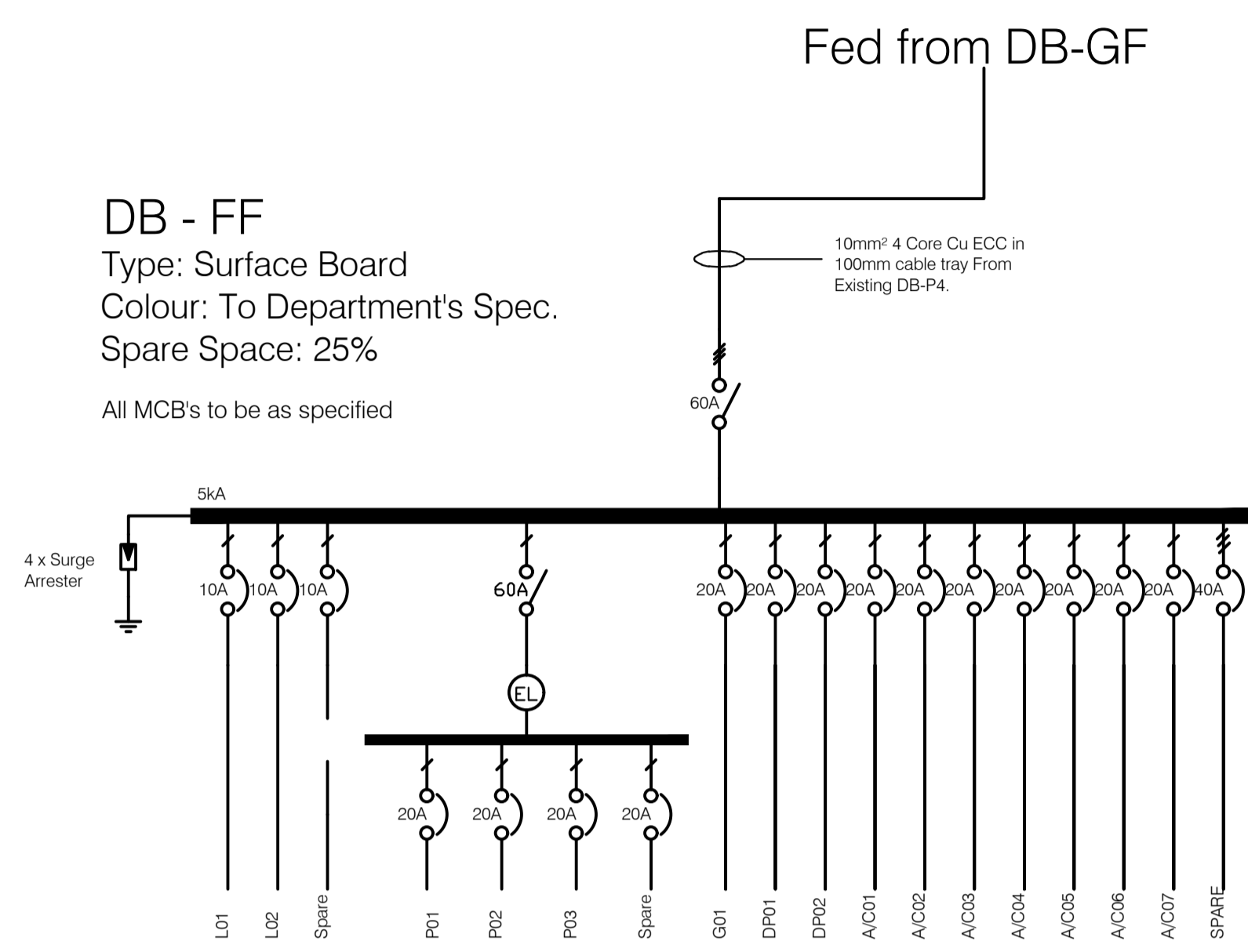
- (1) CHECK ALL DIMENSIONS AND LEVELS BEFORE COMMENCING ANY WORK. PLATFORM LEVELS TO BE VERIFIED BY THE ENGINEER
- (2) DO NOT SCALE FROM THE DRAWINGS. ALL BANKS TO BE LEVELED OUT.
- (3) ANY QUERIES TO BE BROUGHT TO THE ARCHITECT'S ATTENTION. ALL CONDUITING, TIMBER, PVC ETC. SHOULD BE SABS APPROVED QUALITY MATERIALS. ALL STRUCTURAL STEEL, CONCRETE STRENGTH AND TIMBER SPECIFICATION ARE TO BE IN ACCORDANCE WITH ENGINEER'S DETAILS.

CLIENT:
SOUTH CAPE TVET COLLEGE
125 MITCHELL STREET
GEORGE
6530
TEL: 0448840359

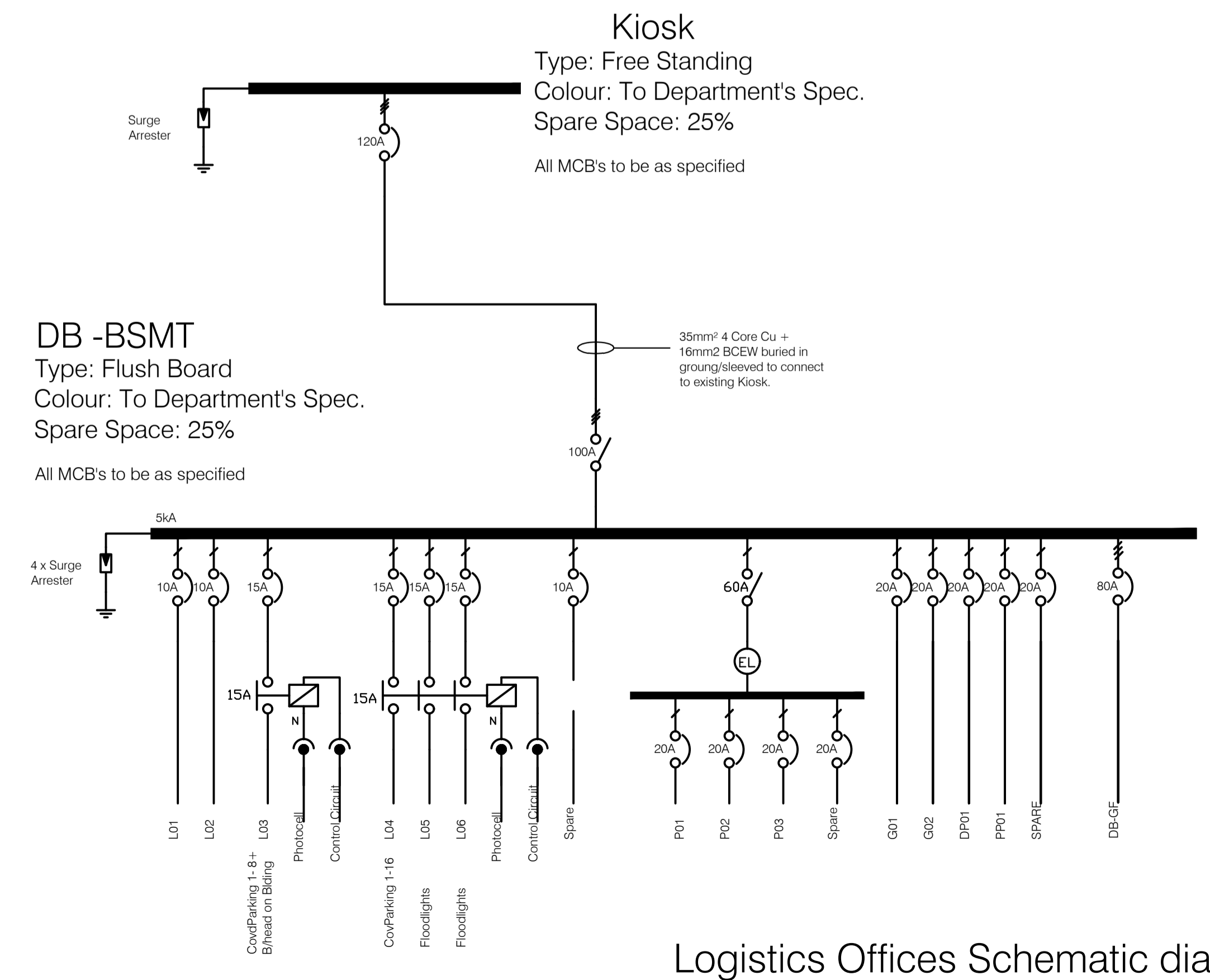
ARCHITECTS:
RMA ARCHITECTS
6 SHIRLEY STREET
NEWTON PARK
PORT ELIZABETH
TEL: 0413652896
SACAP : 4535



Transport Section Schematic diagram



Logistics Offices Schematic diagram



Logistics Offices Schematic diagram




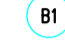
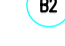

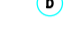
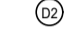







**NORTHLINK TVTET COLLEGE
NEW ANNEX AT CENTRAL OFFICES**

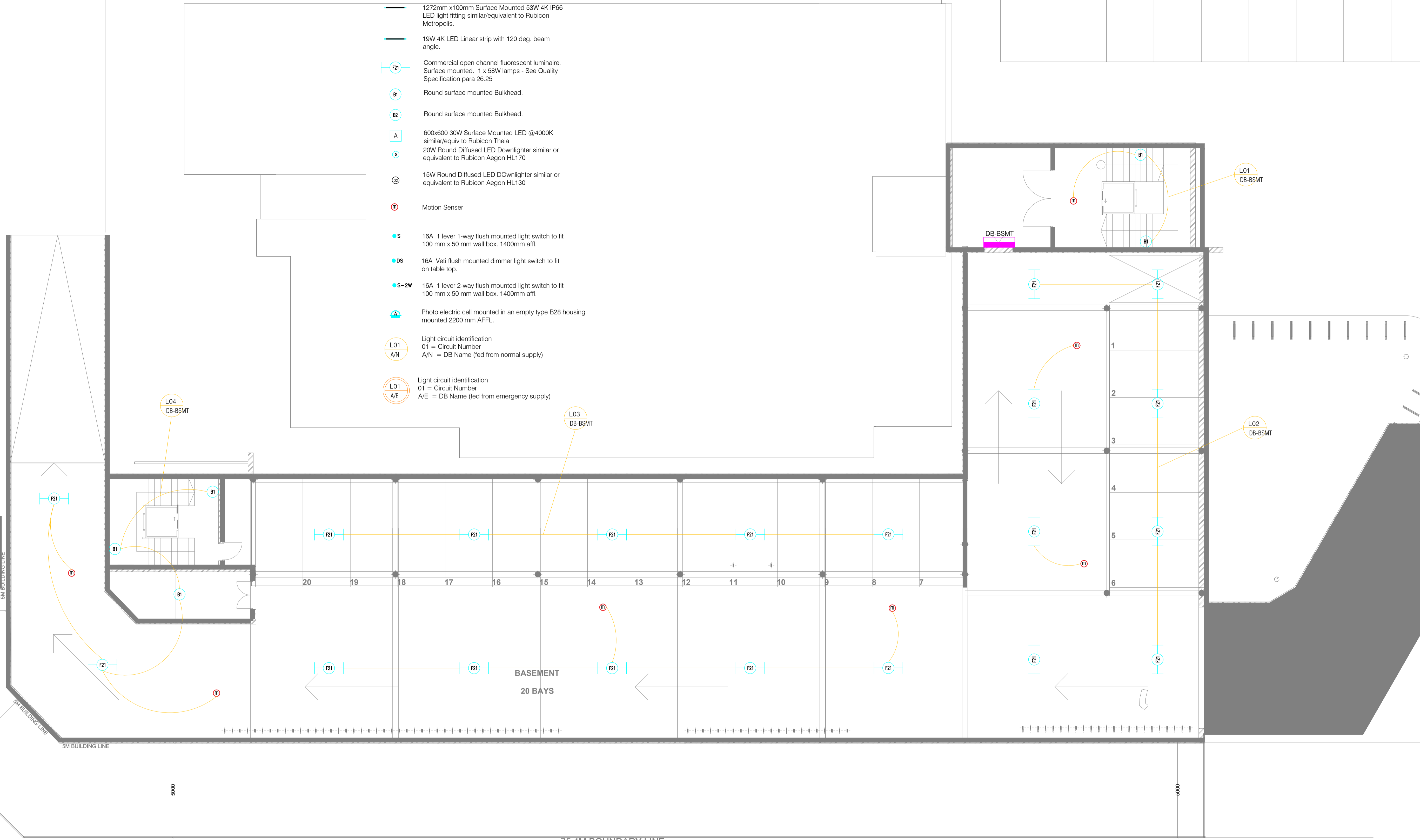
ERF NO:

DRAWING TITLE:
SCHEMATIC DIAGRAM LAYOUT

DRAWN BY	EN	
CHECKED BY	VS	
LATEST ISSUE	26/03/2024	
SCALE	1:100	
PROJ. NO:	DWG NO.	REV NO.
	ELEC009	0

LIGHTING LEGEND

-  1272mm x100mm Surface Mounted 53W 4K IP66 LED light fitting similar/equivalent to Rubicon Metropolis.
-  19W 4K LED Linear strip with 120 deg. beam angle.
-  Commercial open channel fluorescent luminaire. Surface mounted. 1 x 58W lamps - See Quality Specification para 26.25
-  Round surface mounted Bulkhead.
-  Round surface mounted Bulkhead.
-  600x600 30W Surface Mounted LED @4000K similar/equiv to Rubicon Theia
-  20W Round Diffused LED Downlighter similar or equivalent to Rubicon Aegon HL170
-  15W Round Diffused LED Downlighter similar or equivalent to Rubicon Aegon HL130
-  Motion Sensor
-  16A 1 lever 1-way flush mounted light switch to fit 100 mm x 50 mm wall box. 1400mm affl.
-  16A Vetl flush mounted dimmer light switch to fit on table top.
-  16A 1 lever 2-way flush mounted light switch to fit 100 mm x 50 mm wall box. 1400mm affl.
-  Photo electric cell mounted in an empty type B28 housing mounted 2200 mm AFFL.
-  Light circuit identification
01 = Circuit Number
A/N = DB Name (fed from normal supply)
-  Light circuit identification
01 = Circuit Number
A/E = DB Name (fed from emergency supply)



REVISION STATUS				
Rev.	DATE	DESCRIPTION	BY	CHECKD

GENERAL NOTES:

- (1.) CHECK ALL DIMENSIONS AND LEVELS BEFORE COMMENCING ANY WORK. PLATFORM LEVELS TO BE VERIFIED BY THE ENGINEER
- (2.) DO NOT SCALE FROM THE DRAWINGS.
- (3.) ANY QUERIES TO BE BROUGHT TO THE ARCHITECT'S ATTENTION.

ALL CONDUITING, TIMBER, PVC ETC. SHOULD BE SABS APPROVED QUALITY MATERIALS
ALL STRUCTURAL STEEL, CONCRETE STRENGTH AND TIMBER SPECIFICATION ARE TO BE IN ACCORDANCE WITH ENGINEER'S DETAILS.

CLIENT:
SOUTH CAPE TVET COLLEGE
125 MITCHELL STREET
GEORGE
6530
TEL: 0448840359

ARCHITECTS:
RMA ARCHITECTS
6 SHIRLEY STREET
NEWTON PARK
PORT ELIZABETH
TEL: 0413652896
SACAP: 4535



**NORTHLINK TVTET COLLEGE
NEW ANNEX AT CENTRAL
OFFICES**

ERF NO:		
DRAWING TITLE: BASEMENT LIGHTING LAYOUT		
DRAWN BY	EN	
CHECKED BY	VS	
LATEST ISSUE	26/03/2024	
SCALE	1:100	
PROJ. NO:	DWG. NO.	REV. NO.
	ELEC001	0

REVISION STATUS				
Rev.	DATE	DESCRIPTION	BY	CHECKD

GENERAL NOTES:

(1.) CHECK ALL DIMENSIONS AND LEVELS BEFORE COMMENCING ANY WORK. PLATFORM LEVELS TO BE VERIFIED BY THE ENGINEER
ALL RETAINING WALL LEVELS TO BE VERIFIED ON SITE.
ALL BANKS TO BE LEVELED OUT.

(2.) DO NOT SCALE FROM THE DRAWINGS.

(3.) ANY QUERIES TO BE BROUGHT TO THE ARCHITECT'S ATTENTION.
ALL CONDUITING, TIMBER, PVC ETC. SHOULD BE SABS APPROVED QUALITY MATERIALS
ALL STRUCTURAL STEEL, CONCRETE STRENGTH AND TIMBER SPECIFICATION ARE TO BE IN ACCORDANCE WITH ENGINEER'S DETAILS.

CLIENT :

SOUTH CAPE TVET COLLEGE
125 MITCHELL STREET
GEORGE
6530
TEL: 0448840359

ARCHITECTS:

RMA ARCHITECTS
6 SHIRLEY STREET
NEWTON PARK
PORT ELIZABETH
TEL: 0413652896
SACAP: 4535

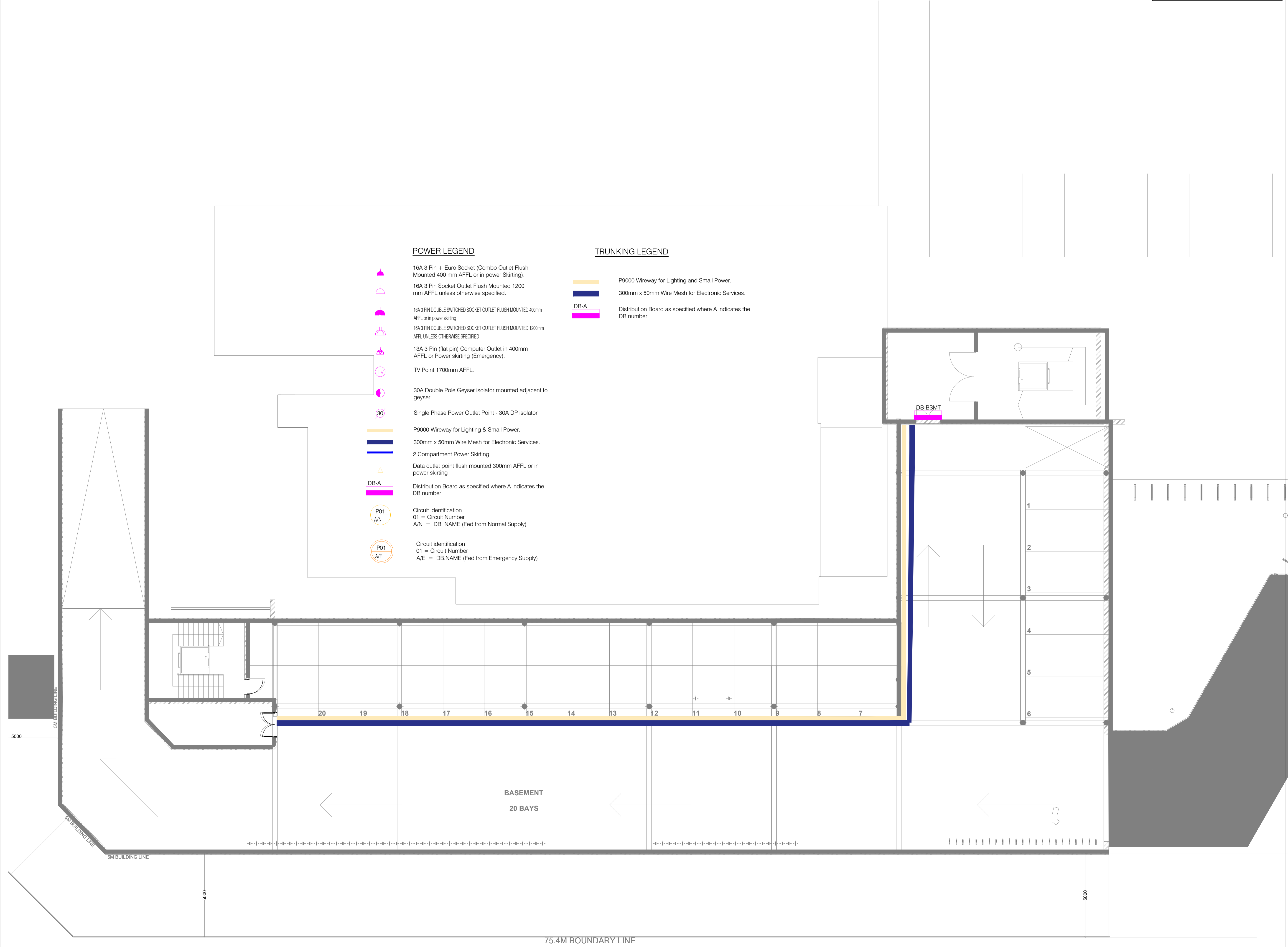


**NORTHLINK TVTET COLLEGE
NEW ANNEX AT CENTRAL
OFFICES**

ERF NO:

DRAWING TITLE: BASEMENT LIGHTING LAYOUT

DRAWN BY	EN
CHECKED BY	VS
LATEST ISSUE	28/03/2024
SCALE	1:100
PROJ. NO:	DWG NO. REV. NO.
	ELEC002 0



CONCEPT DESIGN

REVISION STATUS				
Rev.	DATE	DESCRIPTION	BY	CHECKD

GENERAL NOTES:

(1) CHECK ALL DIMENSIONS AND LEVELS BEFORE COMMENCING ANY WORK. PLATFORM LEVELS TO BE VERIFIED BY THE ENGINEER
ALL RETAINING WALL LEVELS TO BE VERIFIED ON SITE.
ALL BANKS TO BE LEVELED OUT.
(2) DO NOT SCALE FROM THE DRAWINGS.
(3) ANY QUERIES TO BE BROUGHT TO THE ARCHITECT'S ATTENTION.
ALL CONDUITING, TIMBER, PVC ETC. SHOULD BE SABS APPROVED QUALITY MATERIALS
ALL STRUCTURAL STEEL, CONCRETE STRENGTH AND TIMBER SPECIFICATION ARE TO BE IN ACCORDANCE WITH ENGINEER'S DETAILS.

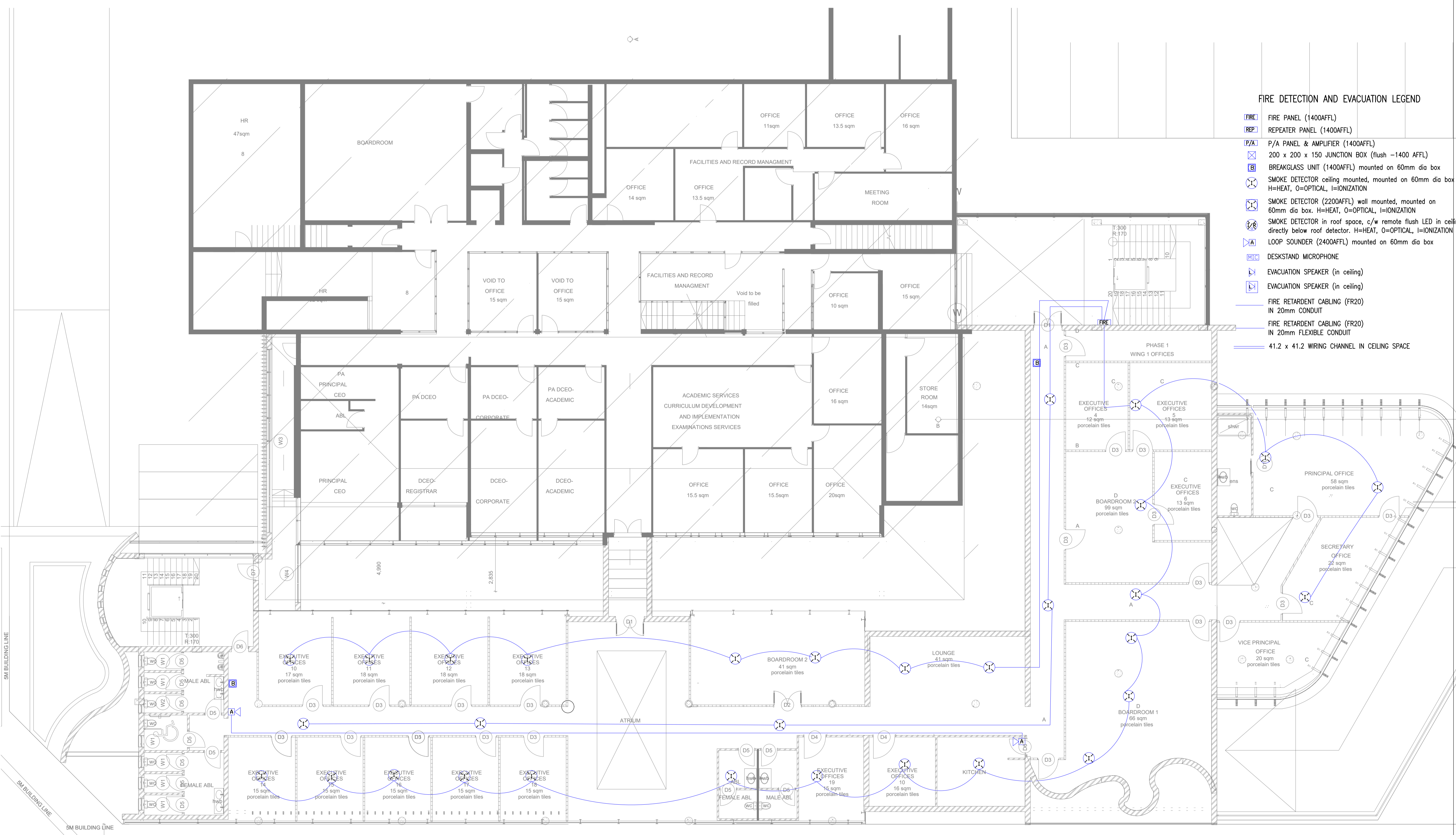
CLIENT:
SOUTH CAPE TVET COLLEGE
125 MITCHELL STREET
GEORGE
6530
TEL: 0448840359

ARCHITECTS:
RMA ARCHITECTS
6 SHIRLEY STREET
NEWTON PARK
PORT ELIZABETH
TEL: 0413652896
SACAP: 4535



FIRE DETECTION AND EVACUATION LEGEND

- FIRE PANEL (1400AFFL)
- REPEATER PANEL (1400AFFL)
- P/A PANEL & AMPLIFIER (1400AFFL)
- 200 x 200 x 150 JUNCTION BOX (flush -1400 AFFL)
- BREAKGLASS UNIT (1400AFFL) mounted on 60mm dia box
- SMOKE DETECTOR ceiling mounted, mounted on 60mm dia box
H=HEAT, O=OPTICAL, I=IONIZATION
- SMOKE DETECTOR (2200AFFL) wall mounted, mounted on 60mm dia box. H=HEAT, O=OPTICAL, I=IONIZATION
- SMOKE DETECTOR in roof space, c/w remote flush LED in ceiling directly below roof detector. H=HEAT, O=OPTICAL, I=IONIZATION
- LOOP SOUNDER (2400AFFL) mounted on 60mm dia box
- DESKSTAND MICROPHONE
- EVACUATION SPEAKER (in ceiling)
- EVACUATION SPEAKER (in ceiling)
- FIRE RETARDANT CABLING (FR20) IN 20mm CONDUIT
- FIRE RETARDANT CABLING (FR20) IN 20mm FLEXIBLE CONDUIT
- 41.2 x 41.2 WIRING CHANNEL IN CEILING SPACE



**NORTHLINK TVTET COLLEGE
NEW ANNEX AT CENTRAL OFFICES**

ERF NO:

DRAWING TITLE:
FIRST FLOOR FIRE LAYOUT

DRAWN BY	EN
CHECKED BY	VS
LATEST ISSUE	26/03/2024
SCALE	1:100

PROJ. NO:	DWG NO:	REV. NO:
	ELEC008	0

CONCEPT DESIGN

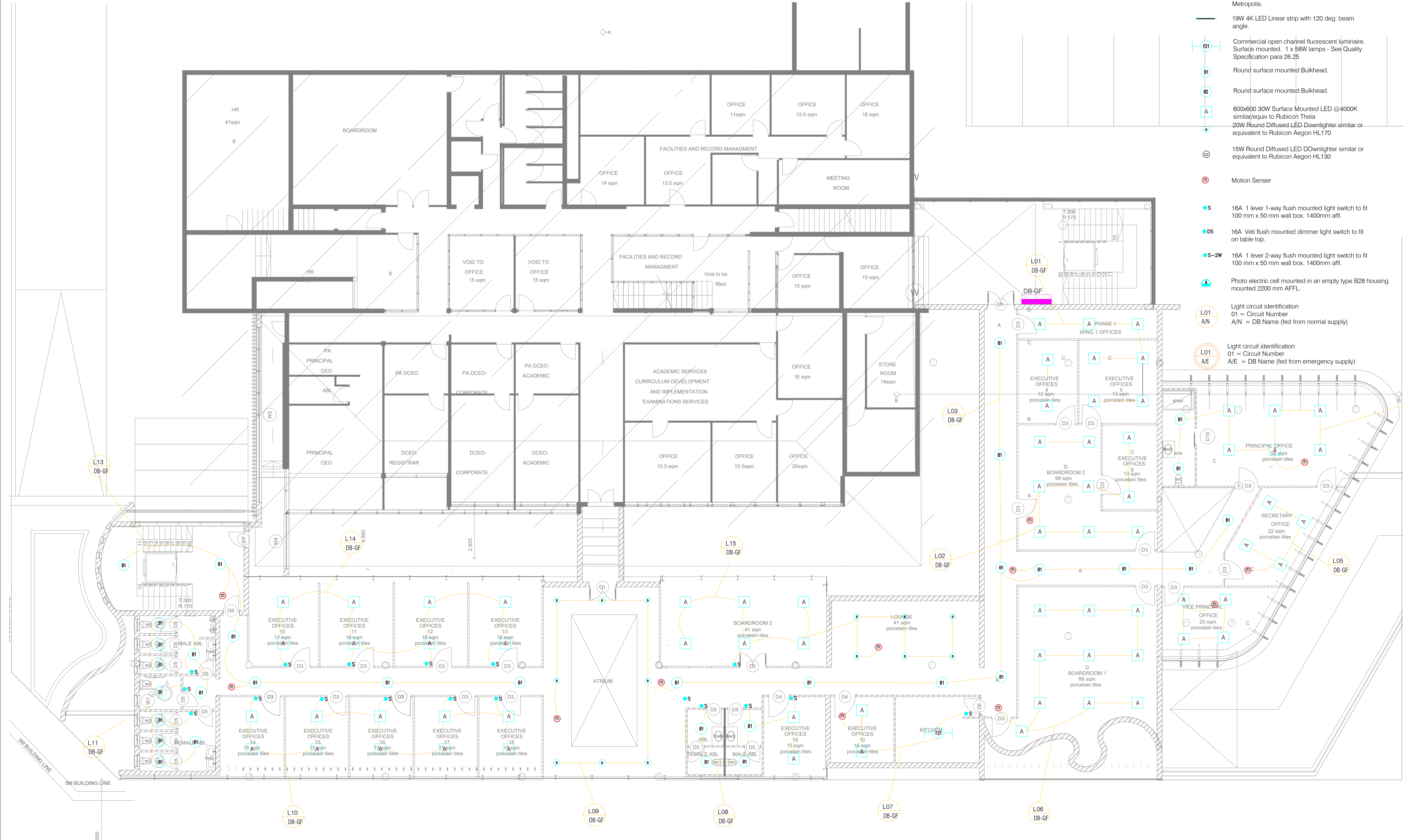
REVISION STATUS				
Rev.	DATE	DESCRIPTION	BY	CHECKD

LIGHTING LEGEND

- 1272mm x 100mm Surface Mounted 53W 4K IP66 LED light fitting similar/equivalent to Rubicon Metropolis.
- 19W 4K LED Linear strip with 120 deg. beam angle.
- Commercial open channel fluorescent luminaire. Surface mounted. 1 x 58W lamps - See Quality Specification para 26.25
- Round surface mounted Bulkhead.
- Round surface mounted Bulkhead.
- 600x600 30W Surface Mounted LED @4000K similar/equiv to Rubicon Theia
- 20W Round Diffused LED Downlighter similar or equivalent to Rubicon Aegon HL170
- 15W Round Diffused LED Downlighter similar or equivalent to Rubicon Aegon HL130
- Motion Sensor
- 16A 1 lever 1-way flush mounted light switch to fit 100 mm x 50 mm wall box. 1400mm affl.
- 16A Veti flush mounted dimmer light switch to fit on table top.
- 16A 1 lever 2-way flush mounted light switch to fit 100 mm x 50 mm wall box. 1400mm affl.
- Photo electric cell mounted in an empty type B28 housing mounted 2200 mm AFFL.

Light circuit identification
 01 = Circuit Number
 A/N = DB Name (fed from normal supply)

Light circuit identification
 01 = Circuit Number
 A/E = DB Name (fed from emergency supply)



GENERAL NOTES:

(1) CHECK ALL DIMENSIONS AND LEVELS BEFORE COMMENCING ANY WORK. PLATFORM LEVELS TO BE VERIFIED BY THE ENGINEER
 ALL RETAINING WALL LEVELS TO BE VERIFIED ON SITE.
 ALL BANKS TO BE LEVELED OUT.

(2) DO NOT SCALE FROM THE DRAWINGS.

(3) ANY QUERIES TO BE BROUGHT TO THE ARCHITECT'S ATTENTION.
 ALL CONDUITING, TIMBER, PVC ETC. SHOULD BE SABS APPROVED QUALITY MATERIALS
 ALL STRUCTURAL STEEL, CONCRETE STRENGTH AND TIMBER SPECIFICATION ARE TO BE IN ACCORDANCE WITH ENGINEER'S DETAILS.

CLIENT:
 SOUTH CAPE TVET COLLEGE
 125 MITCHELL STREET
 GEORGE
 6530
 TEL: 0448840359

ARCHITECTS:
 RMA ARCHITECTS
 6 SHIRLEY STREET
 NEWTON PARK
 PORT ELIZABETH
 TEL: 0413652896
 SACAP: 4535



**NORTHLINK TVTET COLLEGE
 NEW ANNEX AT CENTRAL
 OFFICES**

ERF NO: _____

DRAWING TITLE:
FIRST FLOOR LIGHTING LAYOUT

DRAWN BY:	EN
CHECKED BY:	VS
LATEST ISSUE:	26/03/2024
SCALE:	1:100
PROJ. NO.:	DWG NO.:
ELEC006	REV. NO.:
	0

CONCEPT DESIGN

POWER LEGEND

- 16A 3 Pin + Euro Socket (Combo Outlet Flush Mounted 400 mm AFFL or in power Skirting).
- 16A 3 Pin Socket Outlet Flush Mounted 1200 mm AFFL unless otherwise specified.
- 16A 3 PIN DOUBLE SWITCHED SOCKET OUTLET FLUSH MOUNTED 400mm AFFL or in power skirting
- 16A 3 PIN DOUBLE SWITCHED SOCKET OUTLET FLUSH MOUNTED 1200mm AFFL UNLESS OTHERWISE SPECIFIED
- 13A 3 Pin (flat pin) Computer Outlet in 400mm AFFL or Power skirting (Emergency).
- TV Point 1700mm AFFL.
- 30A Double Pole Geyser isolator mounted adjacent to geyser
- Single Phase Power Outlet Point - 30A DP isolator
- P9000 Wireway for Lighting & Small Power.
- 300mm x 50mm Wire Mesh for Electronic Services.
- 2 Compartment Power Skirting.
- Data outlet point flush mounted 300mm AFFL or in power skirting
- DB-A Distribution Board as specified where A indicates the DB number.
- P01 A/N Circuit identification
01 = Circuit Number
A/N = DB NAME (Fed from Normal Supply)
- P01 A/E Circuit identification
01 = Circuit Number
A/E = DB NAME (Fed from Emergency Supply)

GENERAL NOTES:

- CHECK ALL DIMENSIONS AND LEVELS BEFORE COMMENCING ANY WORK. PLATFORM LEVELS TO BE VERIFIED BY THE ENGINEER
- ALL RETAINING WALL LEVELS TO BE VERIFIED ON SITE.
- ALL BANKS TO BE LEVELED OUT.
- DO NOT SCALE FROM THE DRAWINGS.
- ANY QUERIES TO BE BROUGHT TO THE ARCHITECT'S ATTENTION.
- ALL CONDUITING, TIMBER, PVC ETC. SHOULD BE SABS APPROVED QUALITY MATERIALS
- ALL STRUCTURAL STEEL, CONCRETE STRENGTH AND TIMBER SPECIFICATION ARE TO BE IN ACCORDANCE WITH ENGINEER'S DETAILS.

CLIENT:
SOUTH CAPE TVET COLLEGE
125 MITCHELL STREET
GEORGE
6530
TEL: 0448840359

ARCHITECTS:
RMA ARCHITECTS
6 SHIRLEY STREET
NEWTOWN PARK
PORT ELIZABETH
TEL: 0413652896
SACAP: 4535



NORTHLINK TVTET COLLEGE
NEW ANNEX AT CENTRAL OFFICES

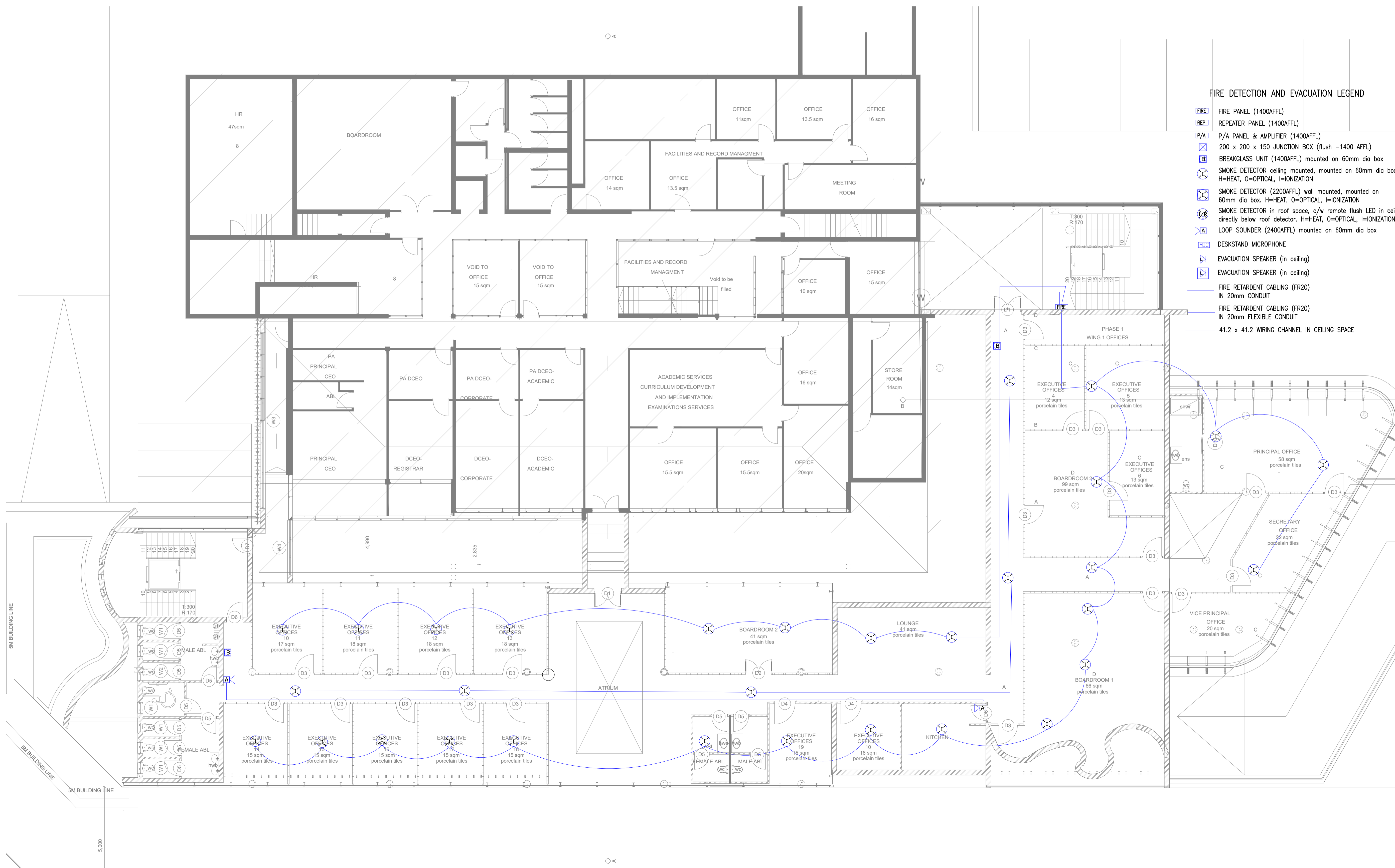
ERF NO:

DRAWING TITLE:
FIRST FLOOR SMALL POWER & DATA LAYOUT

DRAWN BY	EN
CHECKED BY	VS
LATEST ISSUE	26/03/2024
SCALE	1:100

PROJ. NO:	DWG NO:	REV. NO:
	ELEC007	0





FIRE DETECTION AND EVACUATION LEGEND

- FIRE PANEL (1400AFFL)
- REPEATER PANEL (1400AFFL)
- P/A PANEL & AMPLIFIER (1400AFFL)
- 200 x 200 x 150 JUNCTION BOX (flush -1400 AFFL)
- BREAKGLASS UNIT (1400AFFL) mounted on 60mm dia box
- SMOKE DETECTOR ceiling mounted, mounted on 60mm dia box
H=HEAT, O=OPTICAL, I=IONIZATION
- SMOKE DETECTOR (2200AFFL) wall mounted, mounted on 60mm dia box. H=HEAT, O=OPTICAL, I=IONIZATION
- SMOKE DETECTOR in roof space, c/w remote flush LED in ceiling directly below roof detector. H=HEAT, O=OPTICAL, I=IONIZATION
- LOOP SOUNDER (2400AFFL) mounted on 60mm dia box
- DESKSTAND MICROPHONE
- EVACUATION SPEAKER (in ceiling)
- EVACUATION SPEAKER (in ceiling)
- FIRE RETARDANT CABLING (FR20) IN 20mm CONDUIT
- FIRE RETARDANT CABLING (FR20) IN 20mm FLEXIBLE CONDUIT
- 41.2 x 41.2 WIRING CHANNEL IN CEILING SPACE

GENERAL NOTES:

- (1) CHECK ALL DIMENSIONS AND LEVELS BEFORE COMMENCING ANY WORK. PLATFORM LEVELS TO BE VERIFIED BY THE ENGINEER
- ALL RETAINING WALL LEVELS TO BE VERIFIED ON SITE.
- ALL BANKS TO BE LEVELED OUT.
- (2) DO NOT SCALE FROM THE DRAWINGS.
- (3) ANY QUERIES TO BE BROUGHT TO THE ARCHITECT'S ATTENTION.
- ALL CONDUITING, TIMBER, PVC ETC. SHOULD BE SABS APPROVED QUALITY MATERIALS
- ALL STRUCTURAL STEEL, CONCRETE STRENGTH AND TIMBER SPECIFICATION ARE TO BE IN ACCORDANCE WITH ENGINEER'S DETAILS.

CLIENT:
SOUTH CAPE TVET COLLEGE
125 MITCHELL STREET
GEORGE
6530
TEL: 0448840359

ARCHITECTS:
RMA ARCHITECTS
6 SHIRLEY STREET
NEWTON PARK
PORT ELIZABETH
TEL: 0413652896
SACAP: 4535



NORTHLINK TVTET COLLEGE NEW ANNEX AT CENTRAL OFFICES

ERF NO: _____

DRAWING TITLE:
GROUND FLOOR FIRE LAYOUT

DRAWN BY	EN
CHECKED BY	VS
LATEST ISSUE	26/03/2024
SCALE	1:100

PROJ. NO:	DWG NO:	REV. NO:
	ELEC005	0

CONCEPT DESIGN

REVISION STATUS				
Rev.	DATE	DESCRIPTION	BY	CHECKD

GENERAL NOTES:

- (1) CHECK ALL DIMENSIONS AND LEVELS BEFORE COMMENCING ANY WORK. PLATFORM LEVELS TO BE VERIFIED BY THE ENGINEER. ALL RETAINING WALL LEVELS TO BE VERIFIED ON SITE.
- (2) DO NOT SCALE FROM THE DRAWINGS.
- (3) ANY QUERIES TO BE BROUGHT TO THE ARCHITECT'S ATTENTION. ALL CONDUITING, TIMBER, PVC ETC. SHOULD BE SABS APPROVED QUALITY MATERIALS. ALL STRUCTURAL STEEL, CONCRETE STRENGTH AND TIMBER SPECIFICATION ARE TO BE IN ACCORDANCE WITH ENGINEER'S DETAILS.

CLIENT:

SOUTH CAPE TVET COLLEGE
125 MITCHELL STREET
GEORGE
6530
TEL: 0448840359

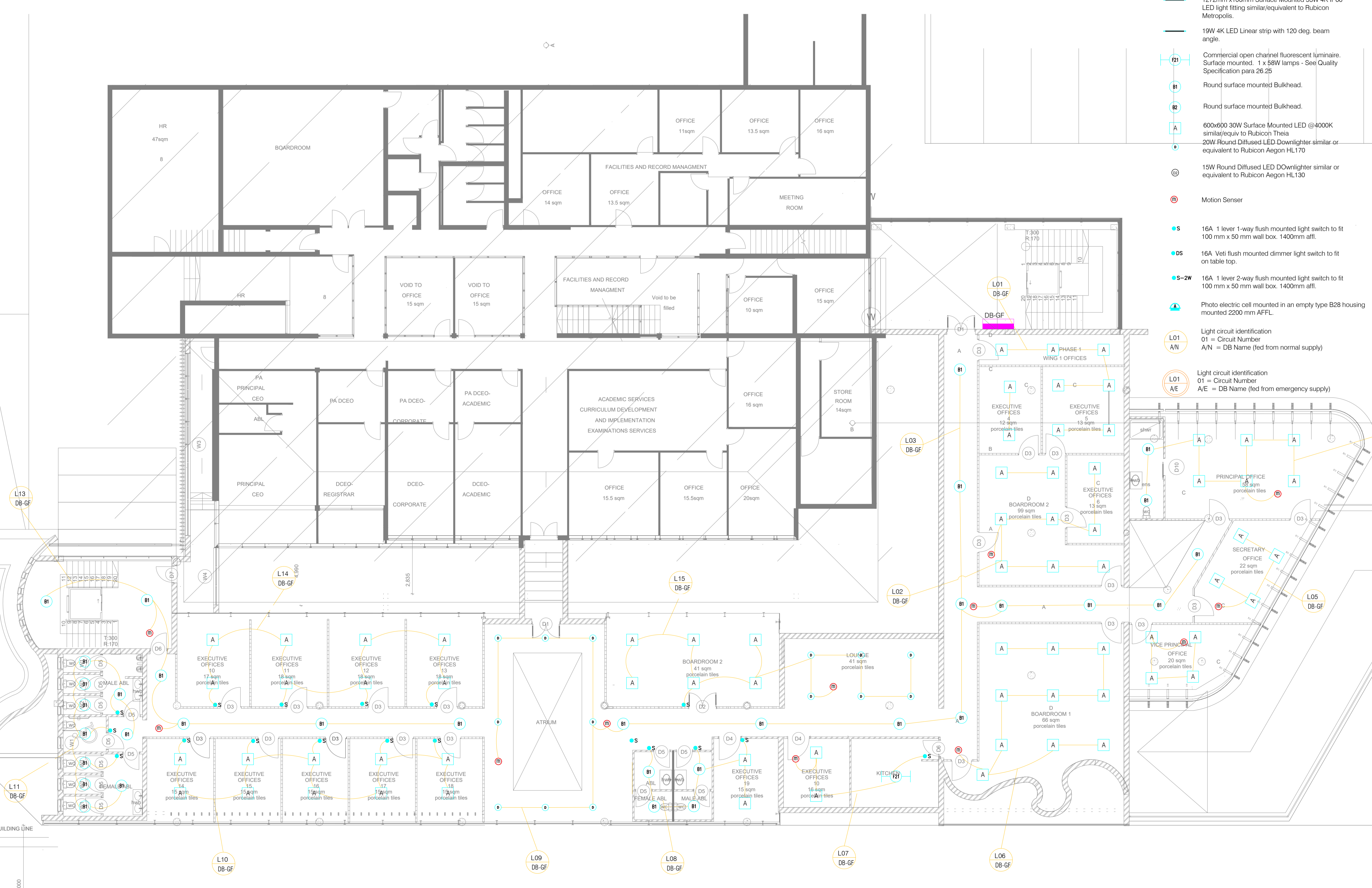
ARCHITECTS:

RMA ARCHITECTS
6 SHIRLEY STREET
PORT ELIZABETH
TEL: 0413652896
SACAP : 4535



LIGHTING LEGEND

- 1272mm x 100mm Surface Mounted 53W 4K IP66 LED light fitting similar/equivalent to Rubicon Metropolis.
- 19W 4K LED Linear strip with 120 deg. beam angle.
- [F2] Commercial open channel fluorescent luminaire. Surface mounted. 1 x 58W lamps - See Quality Specification para 26.25
- [B1] Round surface mounted Bulkhead.
- [B2] Round surface mounted Bulkhead.
- [A] 600x600 30W Surface Mounted LED @4000K similar/equiv to Rubicon Theia
- 20W Round Diffused LED Downlighter similar or equivalent to Rubicon Aegon HL170
- 15W Round Diffused LED Downlighter similar or equivalent to Rubicon Aegon HL130
- [M] Motion Sensor
- [S] 16A 1 lever 1-way flush mounted light switch to fit 100 mm x 50 mm wall box. 1400mm afl.
- [DS] 16A Veti flush mounted dimmer light switch to fit on table top.
- [S-2W] 16A 1 lever 2-way flush mounted light switch to fit 100 mm x 50 mm wall box. 1400mm afl.
- [A] Photo electric cell mounted in an empty type B28 housing mounted 2200 mm AFFL.
- [L01 A/N] Light circuit identification
01 = Circuit Number
A/N = DB Name (fed from normal supply)
- [L01 A/E] Light circuit identification
01 = Circuit Number
A/E = DB Name (fed from emergency supply)



NORTHLINK TVTET COLLEGE NEW ANNEX AT CENTRAL OFFICES

ERF NO:

DRAWING TITLE:
GROUND FLOOR LIGHTING LAYOUT

DRAWN BY	EN	
CHECKED BY	VS	
LATEST ISSUE	26/03/2024	
SCALE	1:100	
PROJ. NO:	DWG NO:	REV. NO:
	ELEC003	0