



SEDIBENG TVET COLLEGE
"GROW WITH THE FLOW"

SCOPE OF WORKS FOR THE RENOVATIONS, REFURBISHMENTS AND UPGRADES OF THE (CLASSROOMS) AT
VEREENIGING CAMPUS, SEDIBENG TVET COLLEGE.

Prepared By: SRSQS QUANTITY SURVEYORS (PTY) LTD

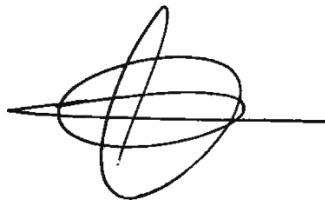
Represented By: Ms. Duduzile Silinda

Approved by: Mr. Marito Mabunda

For:

VEREENIGING CAMPUS – SEDIBENG TVET COLLEGES

MAY 2022



Pretoria Branch

Southdowns Office Park
Block D – Suite 13
Centurion Irene 0123
Tel: 012 665 2632
Fax: 012 665 0822

Polokwane Branch

Unit 6 SRSQS Offices
9 Marshall Street
Polokwane, 0699
Tel: 015 291 1005
Fax: 015 295 7636

Kimberly Branch

124 George Street
Kimberley
8300
Tel: 051 010 0077
Fax: 086 560 4404

Company Reg: 2012/139758/07

Directors: Sandro Shikwambana; Marito Mabunda

INDEX

Background and Purpose
Assessment Methodology
Visual scope of works
Provisional scope of works

Pretoria Branch
Southdowns Office Park
Block D – Suite 13
Centurion Irene 0123
Tel: 012 665 2632
Fax: 012 665 0822

Polokwane Branch
Unit 6 SRSQS Offices
9 Marshall Street
Polokwane, 0699
Tel: 015 291 1005
Fax: 015 295 7636

Kimberly Branch
124 George Street
Kimberley
8300
Tel: 051 010 0077
Fax: 086 560 4404

Company Reg: 2012/139758/07

Directors: Sandro Shikwambana; Marito Mabunda

BACKGROUND AND PURPOSE

Vereeniging Campus is one of the TVET Campuses for Sedibeng TVET Colleges (**SEDCOL**) that was realised with the need for the assessment and repairs of the structural defects, including paintwork to walls and refurbishments to the guard house. The latter upgrade involved the following execution amongst others:

Assessing defects on walls (cracks, etc.) in all classrooms and workshops and fill cracks where applicable.
Remove and replace cornices
Paint walls
Varnish doors

The above scope of works was necessitated with the intension to uplift the status of the offices to accommodate workers in a pleasanter manner to achieve maximum performance in their duties and well-being in offices.

Synchronizing from the above, the achievements of the project are simply listed below:

- Ensure that the small power and lighting works are operational and in good condition.
- Provide a stable and purpose serving classrooms for all staff and students
- Properly and correctly installed ceilings as per specifications

Pretoria Branch
Southdowns Office Park
Block D – Suite 13
Centurion Irene 0123
Tel: 012 665 2632
Fax: 012 665 0822

Polokwane Branch
Unit 6 SRSQS Offices
9 Marshall Street
Polokwane, 0699
Tel: 015 291 1005
Fax: 015 295 7636

Kimberly Branch
124 George Street
Kimberley
8300
Tel: 051 010 0077
Fax: 086 560 4404

Company Reg: 2012/139758/07

Directors: Sandro Shikwambana; Marito Mabunda

VISUAL SCOPE OF WORKS



- Assessing structural cracks
- Fill up the cracks
- Repaint the walls



- Assessing structural cracks
- Fill up the cracks
- Repaint the walls

Pretoria Branch
Southdowns Office Park
Block D – Suite 13
Centurion Irene 0123
Tel: 012 665 2632
Fax: 012 665 0822

Polokwane Branch
Unit 6 SRSQS Offices
9 Marshall Street
Polokwane, 0699
Tel: 015 291 1005
Fax: 015 295 7636

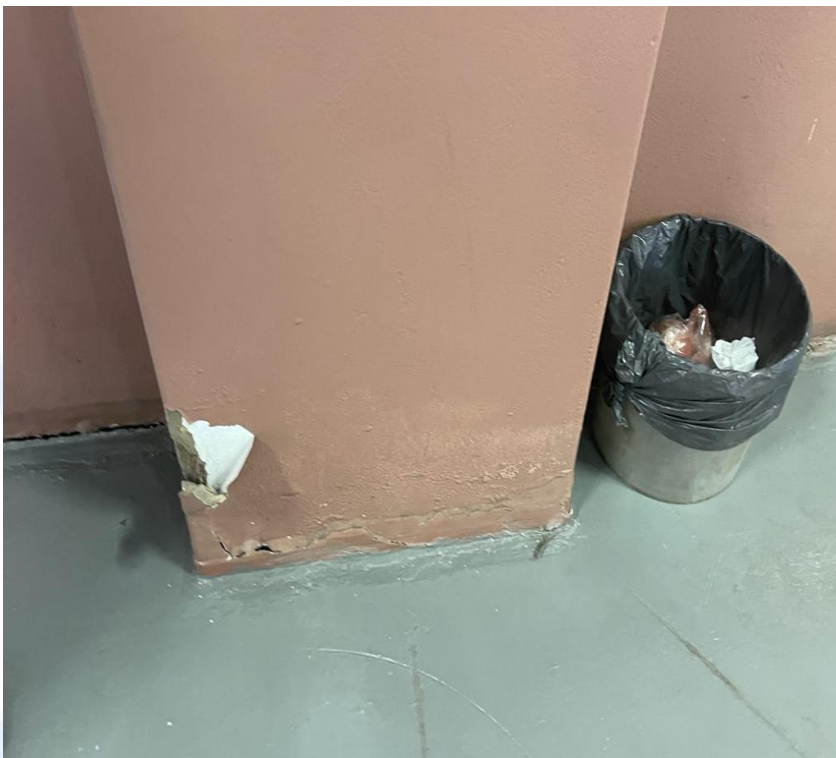
Kimberly Branch
124 George Street
Kimberley
8300
Tel: 051 010 0077
Fax: 086 560 4404

Company Reg: 2012/139758/07

Directors: Sandro Shikwambana; Marito Mabunda



- Assessing structural cracks
- Fill up the cracks
- Repaint the walls



- Assessing structural cracks
- Fill up the cracks
- Repaint the walls

Pretoria Branch
Southdowns Office Park
Block D – Suite 13
Centurion Irene 0123
Tel: 012 665 2632
Fax: 012 665 0822

Polokwane Branch
Unit 6 SRSQS Offices
9 Marshall Street
Polokwane, 0699
Tel: 015 291 1005
Fax: 015 295 7636

Kimberly Branch
124 George Street
Kimberley
8300
Tel: 051 010 0077
Fax: 086 560 4404

Company Reg: 2012/139758/07

Directors: Sandro Shikwambana; Marito Mabunda



- Assessing structural cracks
- Fill up the cracks
- Repaint the floor



- Assessing structural cracks
- Fill up the cracks
- Repaint the floor

Pretoria Branch
Southdowns Office Park
Block D – Suite 13
Centurion Irene 0123
Tel: 012 665 2632
Fax: 012 665 0822

Polokwane Branch
Unit 6 SRSQS Offices
9 Marshall Street
Polokwane, 0699
Tel: 015 291 1005
Fax: 015 295 7636

Kimberly Branch
124 George Street
Kimberley
8300
Tel: 051 010 0077
Fax: 086 560 4404

Company Reg: 2012/139758/07

Directors: Sandro Shikwambana; Marito Mabunda



- Assessing structural cracks
- Fill up the cracks
- Remove existing ceiling
- Supply and install new ceiling and cornices



- Replace glass panes
- Paint the windows

Pretoria Branch
Southdowns Office Park
Block D – Suite 13
Centurion Irene 0123
Tel: 012 665 2632
Fax: 012 665 0822

Polokwane Branch
Unit 6 SRSQS Offices
9 Marshall Street
Polokwane, 0699
Tel: 015 291 1005
Fax: 015 295 7636

Kimberly Branch
124 George Street
Kimberley
8300
Tel: 051 010 0077
Fax: 086 560 4404

Company Reg: 2012/139758/07

Directors: Sandro Shikwambana; Marito Mabunda



- Seal up the cracks
- Prepare the wall to receive new paint



- Replace existing putty and replace with new
- Paint windows

Pretoria Branch
Southdowns Office Park
Block D – Suite 13
Centurion Irene 0123
Tel: 012 665 2632
Fax: 012 665 0822

Polokwane Branch
Unit 6 SRSQS Offices
9 Marshall Street
Polokwane, 0699
Tel: 015 291 1005
Fax: 015 295 7636

Kimberly Branch
124 George Street
Kimberley
8300
Tel: 051 010 0077
Fax: 086 560 4404

Company Reg: 2012/139758/07
Directors: Sandro Shikwambana; Marito Mabunda



- Sand down and varnish existing doors and door frames
- Prepare and paint security gate



- Sand down and varnish existing doors and door frames
- Prepare and paint the door frame
- Prepare the walls to receive new paint

Pretoria Branch
Southdowns Office Park
Block D – Suite 13
Centurion Irene 0123
Tel: 012 665 2632
Fax: 012 665 0822

Polokwane Branch
Unit 6 SRSQS Offices
9 Marshall Street
Polokwane, 0699
Tel: 015 291 1005
Fax: 015 295 7636

Kimberly Branch
124 George Street
Kimberley
8300
Tel: 051 010 0077
Fax: 086 560 4404

Company Reg: 2012/139758/07

Directors: Sandro Shikwambana; Marito Mabunda



- Assess the cracks and repair
- Prepare the wall to receive new paint



- Remove and replace existing cornices
- Paint the ceiling and walls

Pretoria Branch
Southdowns Office Park
Block D – Suite 13
Centurion Irene 0123
Tel: 012 665 2632
Fax: 012 665 0822

Polokwane Branch
Unit 6 SRSQS Offices
9 Marshall Street
Polokwane, 0699
Tel: 015 291 1005
Fax: 015 295 7636

Kimberly Branch
124 George Street
Kimberley
8300
Tel: 051 010 0077
Fax: 086 560 4404

Company Reg: 2012/139758/07

Directors: Sandro Shikwambana; Marito Mabunda



- Seal up the cracks
- Prepare the wall to receive new paint
- Prepare the ceilings to receive new paint



- Seal up the cracks
- Prepare the wall to receive new paint
- Prepare the ceilings to receive new paint

Pretoria Branch
Southdowns Office Park
Block D – Suite 13
Centurion Irene 0123
Tel: 012 665 2632
Fax: 012 665 0822

Polokwane Branch
Unit 6 SRSQS Offices
9 Marshall Street
Polokwane, 0699
Tel: 015 291 1005
Fax: 015 295 7636

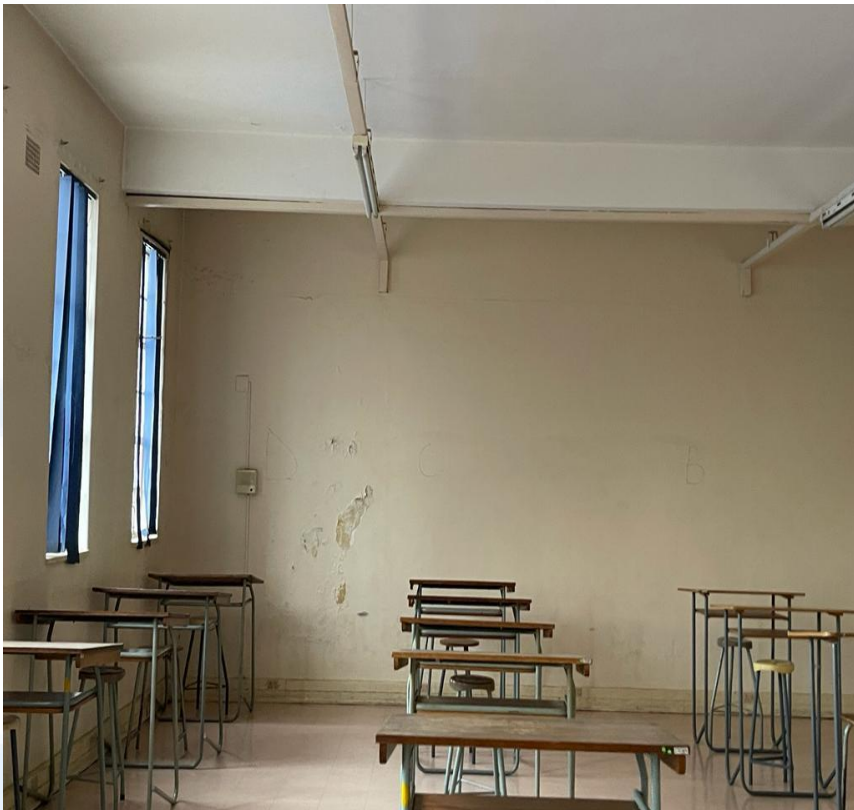
Kimberly Branch
124 George Street
Kimberley
8300
Tel: 051 010 0077
Fax: 086 560 4404

Company Reg: 2012/139758/07

Directors: Sandro Shikwambana; Marito Mabunda



- Seal up the cracks
- Prepare the wall to receive new paint
- Prepare the ceilings to receive new paint



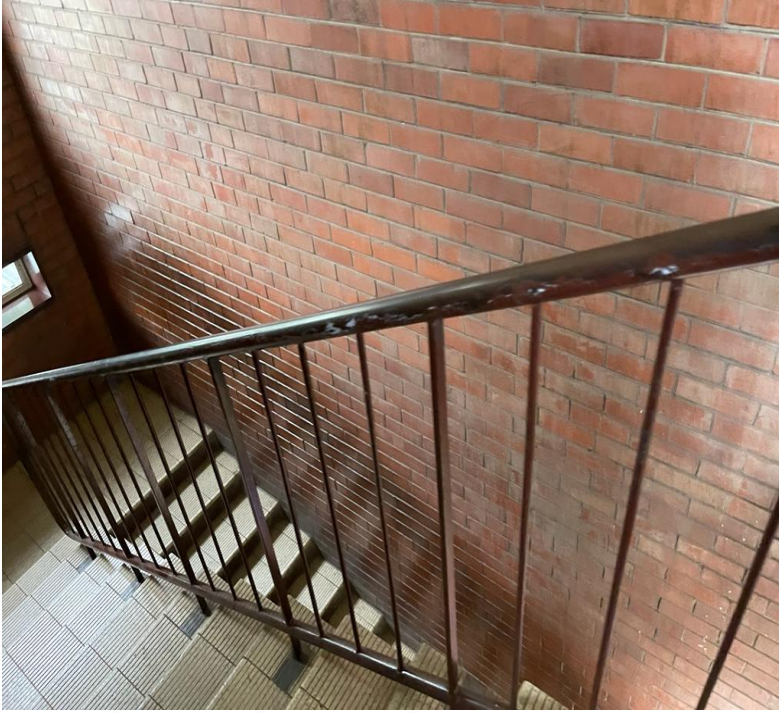
- Seal up the cracks
- Prepare the wall to receive new paint
- Prepare the ceilings to receive new paint

Pretoria Branch
Southdowns Office Park
Block D – Suite 13
Centurion Irene 0123
Tel: 012 665 2632
Fax: 012 665 0822

Polokwane Branch
Unit 6 SRSQS Offices
9 Marshall Street
Polokwane, 0699
Tel: 015 291 1005
Fax: 015 295 7636

Kimberly Branch
124 George Street
Kimberley
8300
Tel: 051 010 0077
Fax: 086 560 4404

Company Reg: 2012/139758/07
Directors: Sandro Shikwambana; Marito Mabunda



- Prepare the balustrading to receive new paint.



- Prepare gate to receive new paintwork

Pretoria Branch
Southdowns Office Park
Block D – Suite 13
Centurion Irene 0123
Tel: 012 665 2632
Fax: 012 665 0822

Polokwane Branch
Unit 6 SRSQS Offices
9 Marshall Street
Polokwane, 0699
Tel: 015 291 1005
Fax: 015 295 7636

Kimberly Branch
124 George Street
Kimberley
8300
Tel: 051 010 0077
Fax: 086 560 4404

Company Reg: 2012/139758/07
Directors: Sandro Shikwambana; Marito Mabunda



- Seal up the cracks
- Prepare the wall to receive new paint
- Prepare the ceilings to receive new paint



- Seal up the cracks
- Prepare the wall to receive new paint
- Prepare the ceilings to receive new paint

Pretoria Branch
Southdowns Office Park
Block D – Suite 13
Centurion Irene 0123
Tel: 012 665 2632
Fax: 012 665 0822

Polokwane Branch
Unit 6 SRSQS Offices
9 Marshall Street
Polokwane, 0699
Tel: 015 291 1005
Fax: 015 295 7636

Kimberly Branch
124 George Street
Kimberley
8300
Tel: 051 010 0077
Fax: 086 560 4404

Company Reg: 2012/139758/07

Directors: Sandro Shikwambana; Marito Mabunda

SCOPE OF WORKS

1. Wall Finishes:

- Existing painted walls to be sanded down where necessary and prepared to receive specified primer and paint coats.
- Damaged walls to be repaired and plastered before receiving final finish.
- All walls with damaged or cracked plaster to be repaired and made good.
- Plastered walls to receive primer and paint coats as per specification.

2. Ceilings:

- All damaged cornices to be replaced with new as per specification.
- All cornices to be have concealed fixing (eg. can be stuck on with cornice adhesive instead of fixing with nails).
- Painting to ceilings

3. Doors, windows and Ironmongery:

- All door and window frames to be clean, sanded down and primed and painted as per specification.
- Take out and remove damaged glass and replace with new.

END OF REPORT

Pretoria Branch
Southdowns Office Park
Block D – Suite 13
Centurion Irene 0123
Tel: 012 665 2632
Fax: 012 665 0822

Polokwane Branch
Unit 6 SRSQS Offices
9 Marshall Street
Polokwane, 0699
Tel: 015 291 1005
Fax: 015 295 7636

Kimberly Branch
124 George Street
Kimberley
8300
Tel: 051 010 0077
Fax: 086 560 4404

Company Reg: 2012/139758/07
Directors: Sandro Shikwambana; Marito Mabunda