



SEDIBENG TVET COLLEGE  
"GROW WITH THE FLOW"

## SCOPE OF WORKS FOR THE MAINTENANCE, REROUTING OF EXISTING ELECTRICAL CABLING

Prepared By: SRSQS QUANTITY SURVEYORS (PTY) LTD  
Represented By: Mr. Tshepo Molelekoa and Ms. Ziphozinhle Khoza  
Approved by: Mr. Marito Mabunda  
For:

SEBOKENG CAMPUS – SEDIBENG TVET COLLEGES

Represented By: Ms. Thandiwe Mbhem

MAY 2022

**Pretoria Branch**  
Southdowns Office Park  
Block D – Suite 13  
Centurion Irene 0123  
Tel: 012 665 2632  
Fax: 012 665 0822

**Polokwane Branch**  
Unit 6 SRSQS Offices  
9 Marshall Street  
Polokwane, 0699  
Tel: 015 291 1005  
Fax: 015 295 7636

**Kimberly Branch**  
124 George Street  
Kimberley  
8300  
Tel: 051 010 0077  
Fax: 086 560 4404

## INDEX

---

Background and Purpose  
Assessment Methodology  
Visual scope of works  
Provisional scope of works

---

**Pretoria Branch**  
Southdowns Office Park  
Block D – Suite 13  
Centurion Irene 0123  
Tel: 012 665 2632  
Fax: 012 665 0822

**Polokwane Branch**  
Unit 6 SRSQS Offices  
9 Marshall Street  
Polokwane, 0699  
Tel: 015 291 1005  
Fax: 015 295 7636

**Kimberly Branch**  
124 George Street  
Kimberley  
8300  
Tel: 051 010 0077  
Fax: 086 560 4404

**Company Reg:** 2012/139758/07

**Directors:** Sandro Shikwambana; Marito Mabunda

## BACKGROUND AND PURPOSE

The Sedibeng TVET College initiated the repair and maintenance of the existing untidy electrical cabling at the Sebokeng Campus to improve the safety reliability, prolonging the protection of students, staff, and the campus against possible hazard.

Therefore, SEDCOL appointed SRSQS Quantity Surveying (Pty) Ltd to carry-out an assessment and propose a suitable safety measure for the untidy electrical cabling at various building at the Sebokeng campus.

The purpose of the assessment was to evaluate the legal compliance based on the relevant SANS standards and thereafter determine the required repairs, maintenance or upgrade works and estimate the cost for the renovations.

Based on the assessment carried out at Sebokeng Campus, the overall electrical works at the campus in terms of safety, is in a relatively old state and shows signs of limited maintenance and upgrade over a long period of time. There is a need tidy the existing electrical cabling to ensure safety at the campus is restored.

As per the Terms of Reference of the appointment, SRSQS Quantity Surveying (Pty) Ltd were to carry-out conditional assessments of the existing cabling mechanism and evaluate the legal compliance of the installations and thereafter determine the required maintenance, repair or replacement works in-order to improve the security measures or non-compliance of the existing electrical cabling mechanism based on the relevant SANS standards and Occupational Health and Safety Standards.

## Assessment Methodology

### Field Investigations

The field investigations focused on the assessment of the existing electrical cabling. Issues of concern from the end-users were also highlighted and noted down.

**Pretoria Branch**  
Southdowns Office Park  
Block D – Suite 13  
Centurion Irene 0123  
Tel: 012 665 2632  
Fax: 012 665 0822

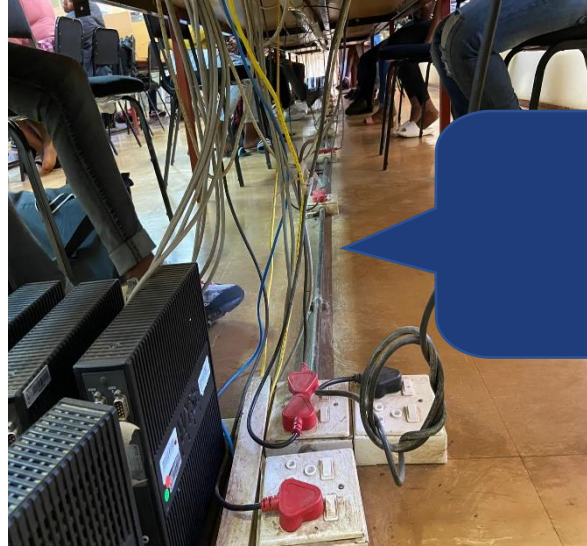
**Polokwane Branch**  
Unit 6 SRSQS Offices  
9 Marshall Street  
Polokwane, 0699  
Tel: 015 291 1005  
Fax: 015 295 7636

**Kimberly Branch**  
124 George Street  
Kimberley  
8300  
Tel: 051 010 0077  
Fax: 086 560 4404

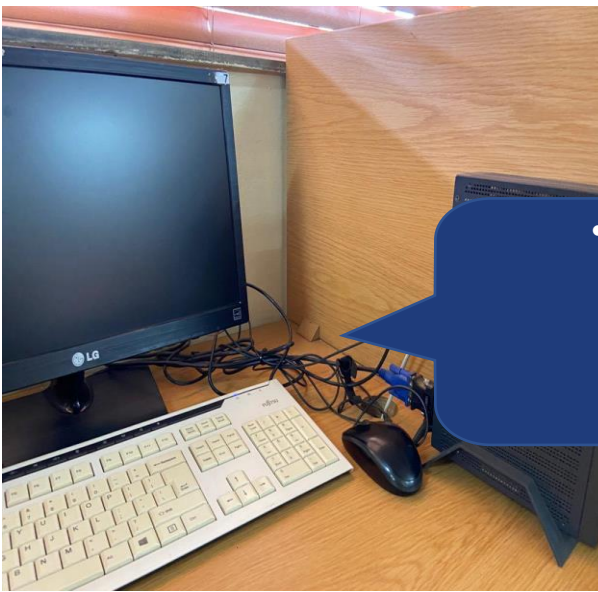
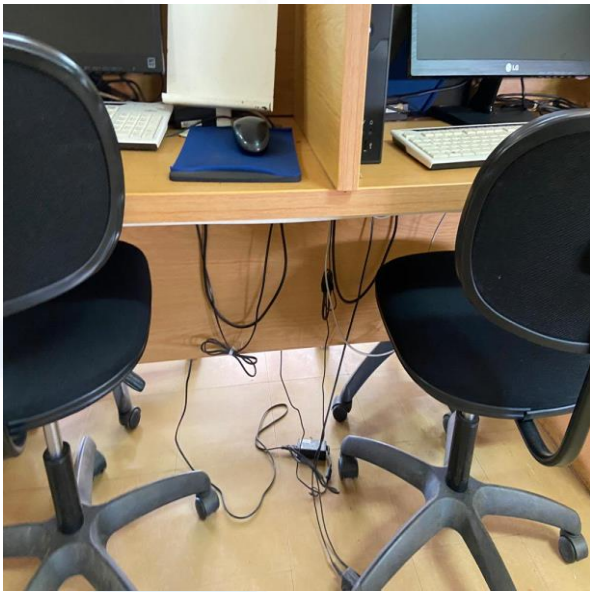
**Company Reg:** 2012/139758/07

**Directors:** Sandro Shikwambana; Marito Mabunda

VISUAL SCOPE OF WORKS – PROPOSED WORKS APPROACH



- Installation of the new power skirting underneath the computer desks complete with accessories.



- Installation of the new power skirting underneath the computer desks complete with accessories.

**Pretoria Branch**  
Southdowns Office Park  
Block D – Suite 13  
Centurion Irene 0123  
Tel: 012 665 2632  
Fax: 012 665 0822

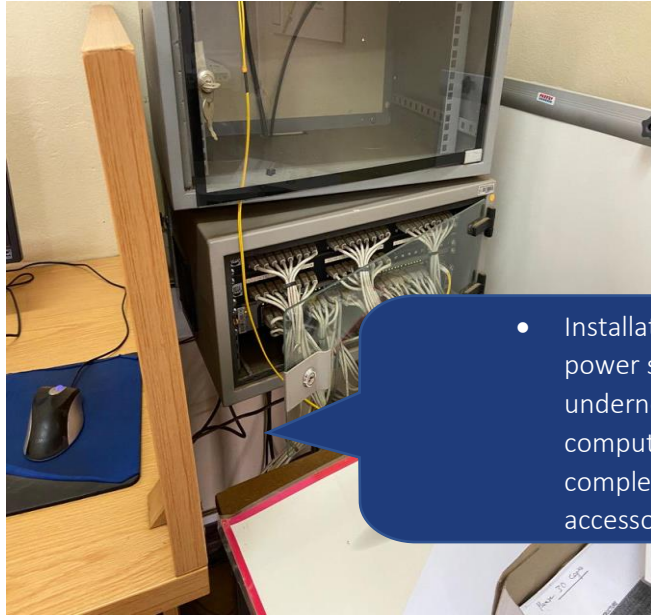
**Polokwane Branch**  
Unit 6 SRSQS Offices  
9 Marshall Street  
Polokwane, 0699  
Tel: 015 291 1005  
Fax: 015 295 7636

**Kimberly Branch**  
124 George Street  
Kimberley  
8300  
Tel: 051 010 0077  
Fax: 086 560 4404

**Company Reg:** 2012/139758/07

**Directors:** Sandro Shikwambana; Marito Mabunda





- Installation of the new power skirting underneath the computer desks complete with accessories.



- Installation of the new power skirting underneath the computer desks complete with accessories.

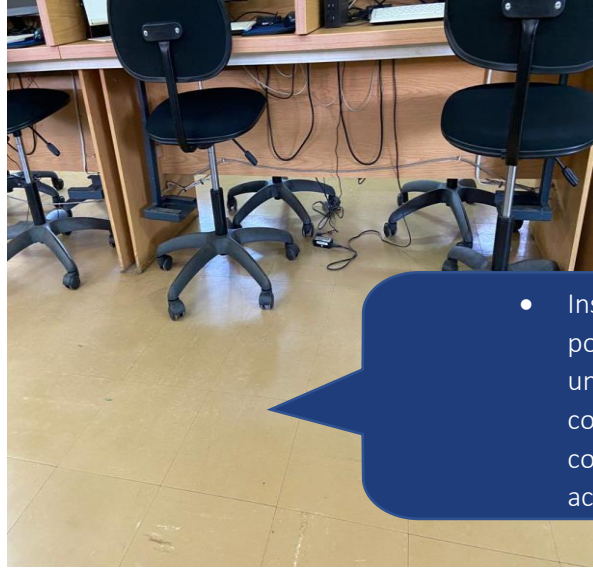
**Pretoria Branch**  
Southdowns Office Park  
Block D – Suite 13  
Centurion Irene 0123  
Tel: 012 665 2632  
Fax: 012 665 0822

**Polokwane Branch**  
Unit 6 SRSQS Offices  
9 Marshall Street  
Polokwane, 0699  
Tel: 015 291 1005  
Fax: 015 295 7636

**Kimberly Branch**  
124 George Street  
Kimberley  
8300  
Tel: 051 010 0077  
Fax: 086 560 4404

**Company Reg:** 2012/139758/07

**Directors:** Sandro Shikwambana; Marito Mabunda



- Installation of the new power skirting underneath the computer desks complete with accessories.



- Installation of the new power skirting underneath the computer desks complete with accessories.

**Pretoria Branch**  
Southdowns Office Park  
Block D – Suite 13  
Centurion Irene 0123  
Tel: 012 665 2632  
Fax: 012 665 0822

**Polokwane Branch**  
Unit 6 SRSQS Offices  
9 Marshall Street  
Polokwane, 0699  
Tel: 015 291 1005  
Fax: 015 295 7636

**Kimberly Branch**  
124 George Street  
Kimberley  
8300  
Tel: 051 010 0077  
Fax: 086 560 4404

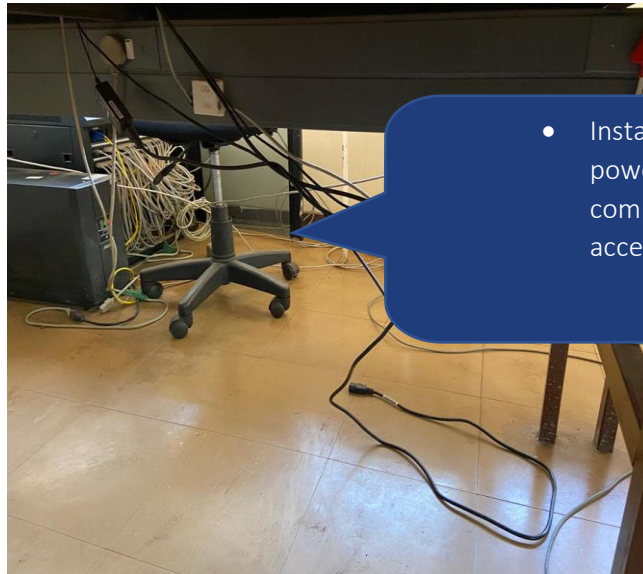
**Company Reg:** 2012/139758/07

**Directors:** Sandro Shikwambana; Marito Mabunda





- Installation of the new power skirting complete with accessories.



- Installation of the new power skirting complete with accessories.

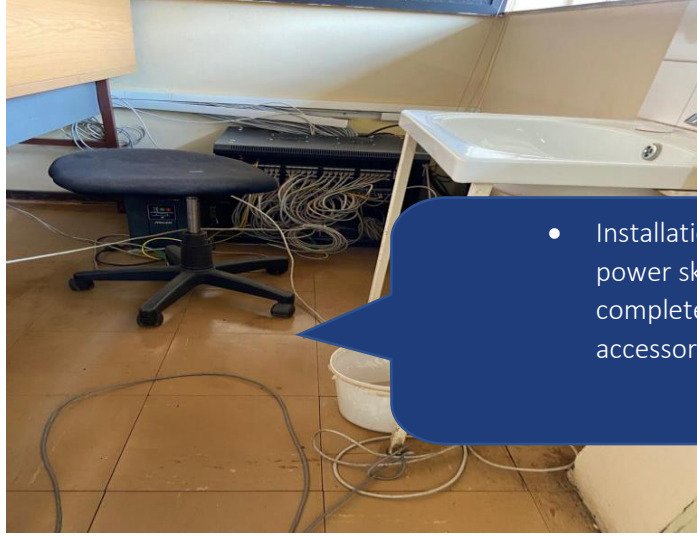
**Pretoria Branch**  
Southdowns Office Park  
Block D – Suite 13  
Centurion Irene 0123  
Tel: 012 665 2632  
Fax: 012 665 0822

**Polokwane Branch**  
Unit 6 SRSQS Offices  
9 Marshall Street  
Polokwane, 0699  
Tel: 015 291 1005  
Fax: 015 295 7636

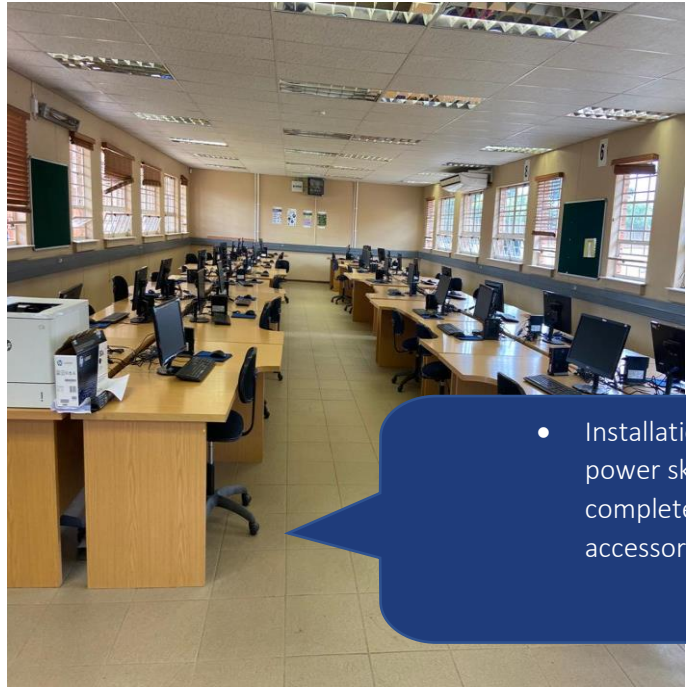
**Kimberly Branch**  
124 George Street  
Kimberley  
8300  
Tel: 051 010 0077  
Fax: 086 560 4404

**Company Reg:** 2012/139758/07

**Directors:** Sandro Shikwambana; Marito Mabunda



- Installation of the new power skirting complete with accessories.



- Installation of the new power skirting complete with accessories.

**Pretoria Branch**  
Southdowns Office Park  
Block D – Suite 13  
Centurion Irene 0123  
Tel: 012 665 2632  
Fax: 012 665 0822

**Polokwane Branch**  
Unit 6 SRSQS Offices  
9 Marshall Street  
Polokwane, 0699  
Tel: 015 291 1005  
Fax: 015 295 7636

**Kimberly Branch**  
124 George Street  
Kimberley  
8300  
Tel: 051 010 0077  
Fax: 086 560 4404

**Company Reg:** 2012/139758/07

**Directors:** Sandro Shikwambana; Marito Mabunda



## PROVISIONAL SCOPE OF WORKS

### 1. ELECTRICAL WORKS:

- Stripping of an existing electrical installation (Small power)
- Installation of the new power skirting underneath the computer desks complete with accessories
- Installation of new power skirting along the wall complete with accessories
- Installation of socket outlets together with wiring and data outlets on the power skirting
- Inspection, testing and commission of new electrical installation
- Issuing of certificate of compliance

---

**END OF REPORT**

**Pretoria Branch**  
Southdowns Office Park  
Block D – Suite 13  
Centurion Irene 0123  
Tel: 012 665 2632  
Fax: 012 665 0822

**Polokwane Branch**  
Unit 6 SRSQS Offices  
9 Marshall Street  
Polokwane, 0699  
Tel: 015 291 1005  
Fax: 015 295 7636

**Kimberly Branch**  
124 George Street  
Kimberley  
8300  
Tel: 051 010 0077  
Fax: 086 560 4404

**Company Reg:** 2012/139758/07  
**Directors:** Sandro Shikwambana; Marito Mabunda